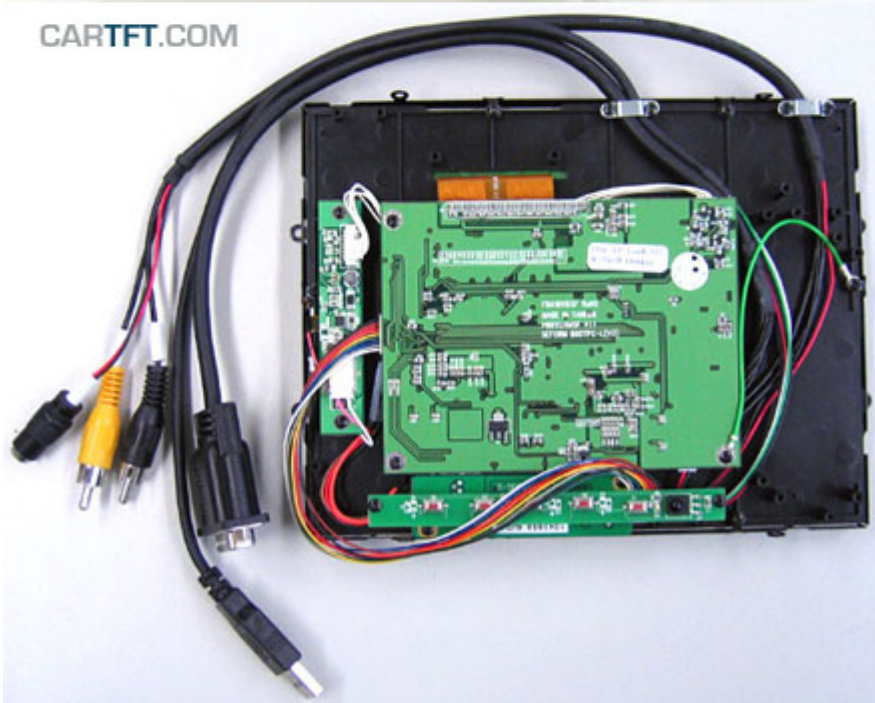




309.00 EUR
incl. 19% VAT, plus [shipping](#)

- Open-Frame !
- LED Backlight !
- Auto Power On !



Support: [Dimensions](#) |  [Dimensions \(PDF\)](#)

New : LED-Backlight-Technology, with optimized color saturation enabling particular high and shining display. The scale of displayable color nuances is increased by 45% because of the new technology. Conventional LCDs are based on CCFL backlight, which can display approx. 72% of the standard color scale of NTSC (National Television Systems Committee). With LED-Backlight-Technology 104% of the NTSC-color scale can be displayed. This results in displaying in a highly realistic manner.

With the new Open-Frame TFT display-series from CarTFT you get back control : The ruggedized metal frame enables you a stable installation. The single modules (Mainboard, Touchscreen controller, Power inverter and button-frame) can be screwed off from the rear side and being positionated elsewhere. This way you can install the connector cables more easier and the display thickness shrinks also.

Note : This Open-Frame TFT display is an offer primarily meant for business and project customers. End consumers should only handle with unprotected electronic parts with appropriate experience.

Possible additional options (starting from a MOQ of 20 units):

- Speakers
- Different cable lengths

- Other display models/sizes
- Touchscreen RS232 instead of USB
- Other connector types
- [...] Ask us !

Additional informations :

With the touchscreen functionality you easily can control your PC. The brilliant VGA-display ensures a maximum readability and sharpness.

AC-Adapter for home usage and a car cigarette lighter adapter are included.

The CTF-800ML can be used with any PC/MAC with VGA- and USB port.

Driver-CD included, compatible with :

- Windows 95/98/ME/NT4/2000/XP/7/8/8.1/10
- XP Tablet PC Edition
- Windows CE 2.12, 3.0, .net
- Linux RedHat, Mandrake, ...
- Macintosh OS 9.x, 10.x
- DOS, ...

Specifications	
Screen size	8.0" digital
Aspect Ratio	4:3 wide TFT screen
Dot Resolution	2400x600= 1,440,000 dots
Physical Resolution	800x600
Supported Resolutions	640x480-1920x1080
Color configuration	RGB stripe
Brightness	600 nits
Contrast	500:1
Operating temperature	-30°C to 85°C
Power input	DC 9-30V
Power consumption	max. 10W
Video system	2x Video inputs (PAL/NTSC) 1x VGA input
Dimensions	185.6 x 143.6 x 27 mm Display : 162 x 121.5 mm
Video input signal	1.0Vp-p, composite video
Features	Full function OSD control (englisch) Auto Power On/Off LED backlight Autodimmer
What is included ?	- 8.0" VGA Open-Frame Touchscreen TFT with Video-support
	- Power Adapter f. EU 230V
	- Cigarette Lighter Adapter
	- Touchscreen Driver-CD
	- Manual